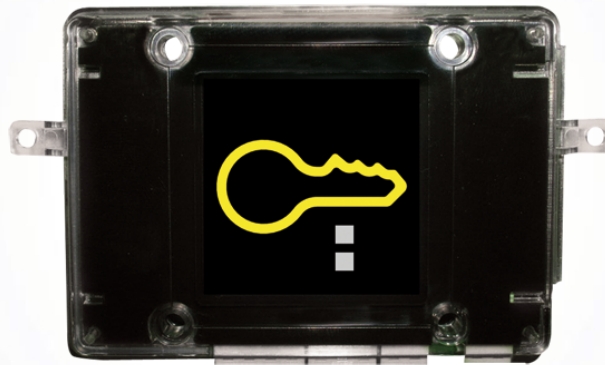




SK9001I

SIMPLEKEY ADVANCED READER IKALL



Central stand-alone module + Mifare® reader to insert into Comelit housing • Watertight PVC housing • Capacity: 1500 badges per module • Programming: Badges encoded using PC software and USB encoder • Adjustable timer: 1 - 60 seconds, preset to 5 seconds • LED indicator for operation and diagnostics • Stores the previous 1000 events • Option to have "pass" transmitters and to manage primary and secondary doors • 1 entrance and 1 exit alarm • 12 - 24 V AC / DC power supply.



SK9001I

SIMPLEKEY ADVANCED READER IKALL

GENERAL DATA

Height (mm):	62
Width (mm):	88
Depth (mm):	23

COMPATIBILITY

Simplebus 2 audio/video system:	Yes
Simplebus 2 audio system:	Yes
Vip system:	Yes
Home Automation system:	Yes



SK9001I

SIMPLEKEY ADVANCED READER IKALL

ACCESSORIES



SK9091

SIMPLE KEY ADVANCED SOFTWARE + USB ENCODER

The encoder connects to the USB port on the management PC, enabling you to encode proximity badges and radio transmitters as well as manage events. Supplied with installation CD, Software licence included - NECESSARY TO PROGRAM SIMPLEKEY ADVANCED SYSTEMS



SK9015

Simplekey adapter with power supply unit 1210

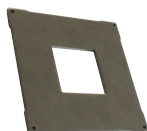
Simplekey adapter for the connection of readers art. SK9000I and SK9001I on external units with power supply unit art. 1210.



SK9073

RS485-USB MODULE FOR NETWORK CONNECTION

Allows you to connect SimpleKey Advanced modules to the local network or internet so that you can do the following:., Immediately cancel a lost badge or transmitter, Retrieve events, Open doors remotely, Change settings



3179S

MODULE FOR SIMPLEKEY READER, VANDALCOM SERIES

Module made using double 2.5 mm 316 stainless steel plate, with facility for housing SimpleKey units SK9000I-SK9001I-SK9030I. Dimensions: 106x106x9 mm